



Webbs  
Helping people move since 1994

**Bishops Grange | Rugeley | WS15 3JY**

**£430,000**



## Summary

Nestled in the charming area of Bishops Grange, Rugeley, this delightful four-bedroom detached house offers a perfect blend of comfort and modern living. Upon entering, you are welcomed into a spacious lounge that exudes warmth and invites relaxation. The property boasts a further reception room, ideal for family gatherings or as a quiet study.

The well-appointed kitchen is designed for both functionality and style, along side the dining room, making it perfect for entertaining guests. A conservatory extends the living space, providing a bright and airy area to enjoy the garden views throughout the seasons. The property also has a utility for extra storage.

The four generously sized bedrooms include an ensuite bathroom to the main bedroom, ensuring privacy and convenience. Additionally, there is a guest WC and a family bathroom, catering to the needs of a busy household.

Outside, the good-sized garden offers a tranquil retreat, perfect for outdoor activities or simply unwinding in the fresh air. The property also features a driveway and a garage, providing ample parking

## Key Features

- Four Bedrooms
- Conservatory
- Garage
- Generous Sized Garden
- Detached Property
- Further Reception Room
- En-suite to Main Bedroom
- Utility

## Rooms and Dimensions

### Entrance Hallway

#### Lounge

14'6" x 11'1" (4.43 x 3.38)

#### Dining Room

8'5" x 15'2" (2.58 x 4.63)

#### Kitchen

11'6" x 11'1" (3.53 x 3.39)

#### Reception Room

15'4" x 7'8" (4.68 x 2.36)

#### Utility

9'0" x 7'1" (2.76 x 2.17)

#### Guest WC

#### Conservatory

8'3" x 12'4" (2.53 x 3.78)

#### Landing

#### Bedroom One

11'4" x 11'8" (3.46 x 3.56)

#### Ensuite

#### Bedroom Two

11'9" x 11'2" (3.59 x 3.41)

#### Bedroom Three

12'9" x 8'4" (3.91 x 2.55)

#### Bedroom Four

9'3" x 8'1" (2.82 x 2.48)

#### Bathroom

8'4" x 6'10" (2.55 x 2.09)

#### Garage

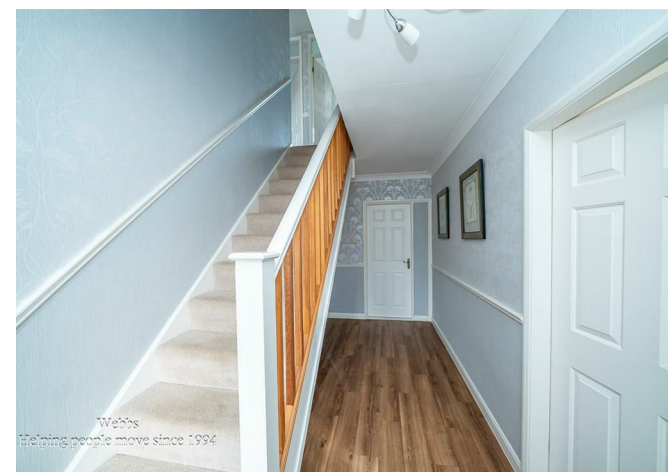
17'1" x 7'8" (5.23 x 2.34)

#### Driveway

#### Rear Gareden

#### IDENTIFICATION CHECKS - C

#### Agents Notes







Webbs Estate Agents - endeavour to maintain accurate depictions of properties in Virtual Tours, Floor Plans and descriptions, however, these are intended only as a guide and purchasers must satisfy themselves by personal inspection.

